

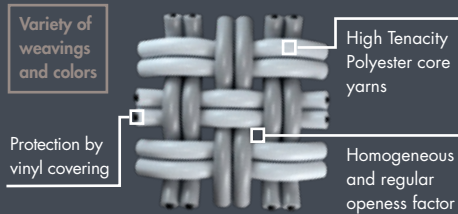
POLYSCREEN®



T3



POLYSCREEN® 550



MÁXIMA EFICIENCIA TÉRMICA Y LUMÍNICA CON ESTÉTICA TEXTIL

- Excelente protección térmica gestión de hasta el 94% de energía solar ($G_{tote} = 0.06 - G_{toti} = 0.24$).
- Visibilidad exterior y eficiencia térmica: 5% de apertura homogénea
- Rendimiento energético: contribuye al ahorro energético en calefacción y aire acondicionado.
- Filtrado de la luz muy eficaz: bloqueo del 95% de la luz (TV=5%)
- Tejido sostenible, respetuoso con la salud y el medio ambiente, 100% reciclable.
- Calidad del aire: inoloro, no desprende COV (certificado Greenguard Gold).
- Enrolle perfecto incluso para grandes dimensiones (ancho 250-300 cm).
- Resistencia a condiciones meteorológicas extremas (IMO) y al cloro.

ASPECT TEXTILE PRONONCÉ POUR UNE EFFICACITÉ THERMIQUE ET VISUELLE RENFORCÉE

- Protection thermique renforcée : jusqu'à 94% de l'énergie solaire maîtrisée ($G_{tote} = 0.06 - G_{toti} = 0.24$)
- Visibilité extérieure et efficacité thermique : 5% d'ouverture homogène
- Performances énergétiques : contribue aux économies de chauffage et de climatisation
- Filtre efficacement la lumière : 95% de la lumière stoppée (TV = 5%)
- Tissu éco-conçu, respectueux de la santé et de l'environnement, 100% recyclable
- Qualité de l'air : sans odeur, il ne dégage pas de COV (certifié Greengard Gold)
- Excellent enroulement même en grandes dimensions (largeur 250-300 cm)
- Résiste aux conditions météorologiques en milieux les plus extrêmes (IMO), résistance au chlore

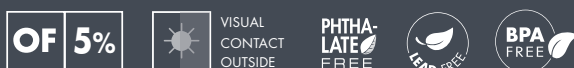
MAXIMUM THERMAL AND LIGHT EFFICIENCY WITH A TEXTILE APPEARANCE

- Excellent thermal protection, managing up 94% of solar heat (both indoors and outdoors: $G_{tote} = 0.06 - G_{toti} = 0.24$).
- Visibility to the outside and thermal efficiency: 5% degree of opening, throughout the entire shade
- Energy efficiency: contributes to energy savings in heating and air conditioning.
- Highly efficient sunlight filter: blocks 95% of the sunlight (TV=5%)
- A sustainable, 100% recyclable, environmentally friendly and health-friendly fabric.
- Air quality: colorless, VOC emission free (Greenguard Gold certified).
- Perfect roll, even in large sizes (250-300 cm in width).
- Resistant to extreme climate conditions (IMO) and chlorine.

MASSIMA EFFICIENZA TERMICA E LUMINICA CON ESTETICA TESSILE

- Eccellente protezione termica, gestione fino al 94% di energia solare ($G_{tote} = 0.06 - G_{toti} = 0.24$).
- Visibilità esterna ed efficienza termica: 5% di apertura omogenea
- Rendimento energetico: contribuisce al risparmio energetico nel riscaldamento e nell'aria condizionata.
- Filtraggio della luce molto efficace: blocco del 95% della luce (TV=5%)
- Tessuto sostenibile, rispettoso della salute e dell'ambiente, 100% riciclabile.
- Qualità dell'aria: inodore, non rilascia COV (certificato Greenguard Gold).
- Avvolgimento perfetto anche per grandi dimensioni (larghezza 250-300 cm).
- Resistenza a condizioni meteorologiche estreme (IMO) e al cloro.

PROPERTIES



MAINTENANCE



CERTIFICATES

FABRICS CERTIFICATES



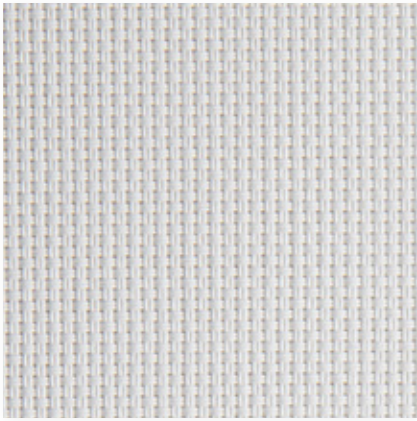
COMPANY & SYSTEMS CERTIFICATES



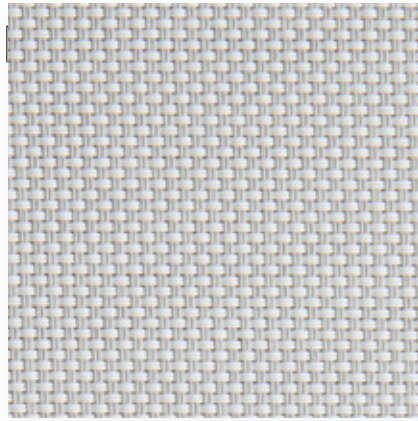
Contributing to Ecofriendly Building



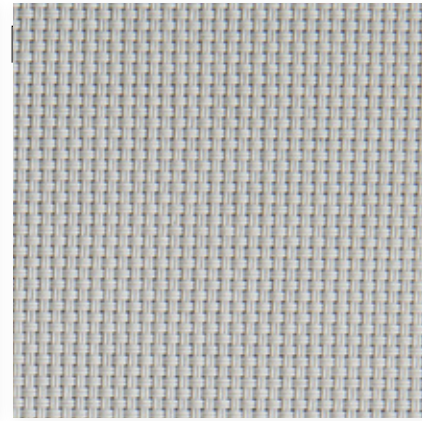
contract.bandalux.com



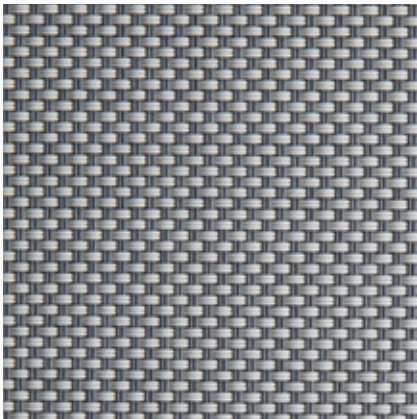
White
Ref. 10002



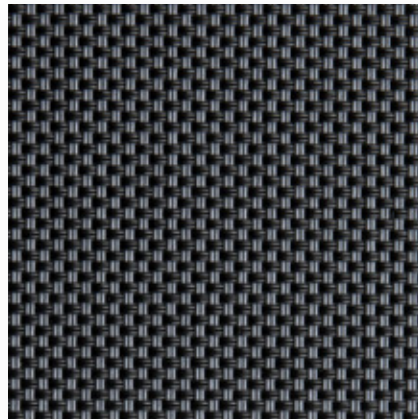
White Pearl
Ref. 10027



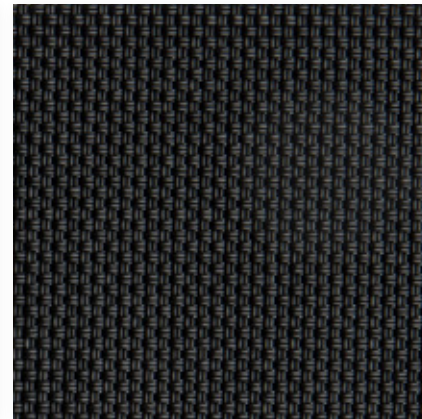
Pearl
Ref. 10007



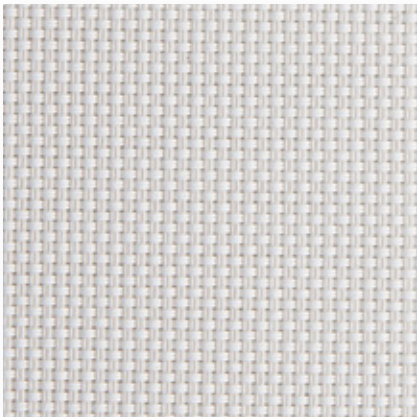
Pearl Grey
Ref. 10071



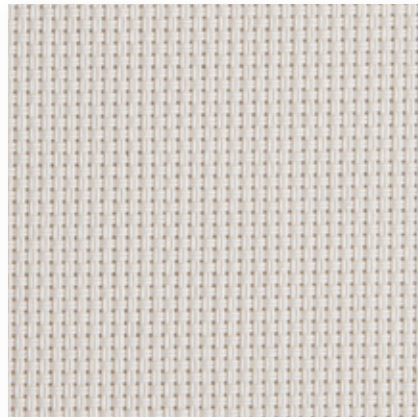
Ebony Grey
Ref. 10099



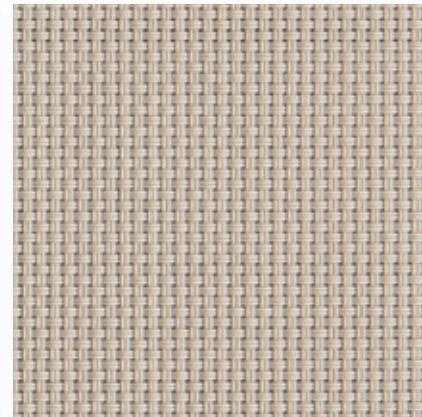
Ebony
Ref. 10080



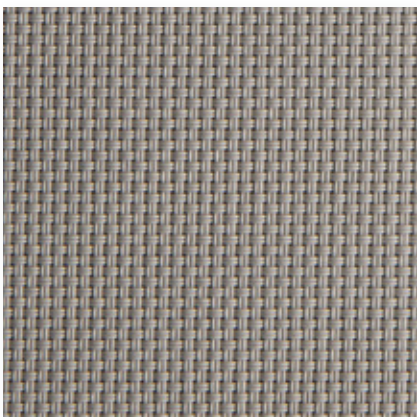
White Linen
Ref. 10220



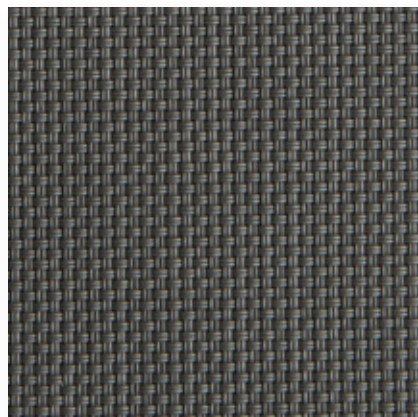
Linen
Ref. 10020



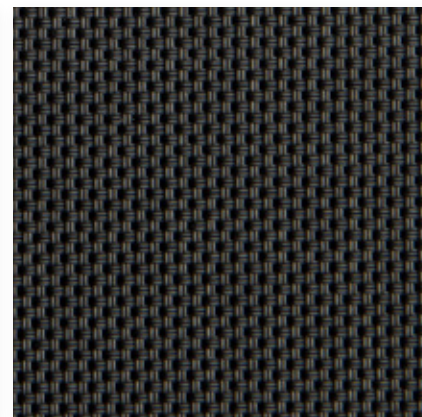
Cinder
Ref. 10958



Pebble
Ref. 10959



Slate
Ref. 10850



Tobacco
Ref. 10069

OF 5%

POLYSCREEN® 550

TECHNICAL DATA

Composición / Composition / Composition / Composizione	-	85% PVC + 15% PES
Peso / Poids / Weight / Peso	EN 12127	610 g/m ² - 17,99 oz/yd ²
Espesor / Épaisseur / Thickness / Spessore	EN ISO 5084	0,78 mm - 0,031"
Ancho de rollo / Largeur rouleau Roll width / Larghezza del tessuto	-	250 cm - 98"
Grado de apertura / Coefficient d'ouverture Openess Factor / Grado di apertura (%)	-	5%
Resistencia al fuego / Classement feu Fire classification / Resistenza al fuoco	NF P 92 503 EN 13773 DIN 4102 EN 13501-1 NFPA 701 - CAN/ULC-S109-3 UNI 9177	M1 Class 1 B1 Bs2d0 Pass Classe 1
Wheelmark	IMO Res.MSC.307(88)-(2010 FTP Code) IMO MSC/Circ. 1102	Pass
Resistencia al desgarro / Résistance à la déchirure Tear resistance / Resistenza alla trazione (daN)	EN ISO 13937-3	6,6 daN - 5,3 daN
Resistencia a la ruptura / Résistance rupture Tensile strength / Resistenza alla rottura (daN/5cm)	EN ISO 13934-1	174 daN - 133 daN
Resistencia a la luz / Résistance à la lumière Light Fastness / Resistenza alla luce (Grey Scale)	EN ISO 105 B06 (interior) EN ISO 105 B03 (exterior) EN ISO 105 B04 (exterior) EN ISO 4892-2 (exterior)	5/5 4/5 White
Resistencia a la luz / Résistance à la lumière Light Fastness / Resistenza alla luce (Blue Scale)	EN ISO 105 B02 (interior)	8/8 7/8 White
Test de olores / Test d'odeur / Odour test / Test degli odori	PV3900	3 Pass
Resistencia en ambientes salinos Résistance aux environnements salins Durability in saline environment Resistenza in ambienti salini	EN ISO 112-017:92 ISO 9227-90	Sin cambios en la superficie (max.nivel) Aucun changement en surface (niveau max.) Whitout changes in surface (max. level) Senza cambi in superficie (niveplo mass)
Actividad antimicrobiana / Activité antibacterienne Antimicrobial activity / Attività antimicrobica	ASTM 2180-01 and ASTM G21-09	Inhbe la proliferación de bacterias Pas de prolifération de bactérie Microorganism growth inhibition Impedisce la proliferazione dei batteri
Material reciclado / Matériaux recyclés Recycled material / Materiali riciclati	-	2% Pre-consumer

THERMAL FACTORS

OPTICAL FACTORS

Ref.	Colors	% Ts	% Rs	% As	EN13363-1 (10% FRAME - Standard C and D)								EN410 - EN14500 - EN14501							
					G _{TOT} int Glazing C		G _{TOT} int Glazing D		G _{TOT} ext Glazing C		G _{TOT} ext Glazing D		% Tv	% Rv	% Tv,n-n	% Tv,n-diff	Glare Control Class	Night Privacy Class	Visual Contact Class	Daylight Utilisation Class
					G _{TOT}	CLASS	G _{TOT}	CLASS	G _{TOT}	CLASS	G _{TOT}	CLASS								
10958	Cinder	11	40	49	0,40	1	0,25	2	0,10	3	0,07	4	7	42	4	3	2	2	2	1
10080	Ebony	7	3	90	0,50	0	0,28	2	0,09	4	0,08	4	7	3	6,5	0,5	1	1	3	1
10099	Ebony Grey	6	7	87	0,49	1	0,28	2	0,09	4	0,07	4	6	8	6	0	1	1	3	1
10020	Linen	21	54	25	0,36	1	0,24	2	0,14	3	0,10	3	17	61	7	10	0	1	2	2
10007	Pearl	14	43	43	0,39	1	0,25	2	0,11	3	0,08	4	10	46	6	4	0	1	3	2
10071	Pearl Grey	11	29	60	0,43	1	0,26	2	0,10	3	0,08	4	9	33	7	2	1	1	3	1
10959	Pebble	8	31	61	0,42	1	0,26	2	0,08	4	0,07	4	5	33	4	1	3	2	2	1
10850	Slate	5	12	83	0,47	1	0,27	2	0,08	4	0,06	4	5	13	4	0,4	3	2	2	1
10069	Tobacco	5	5	90	0,49	1	0,28	2	0,08	4	0,07	4	5	5	5	0,3	1	1	3	1
10002	White	19	69	12	0,32	2	0,23	2	0,13	3	0,09	4	15	78	6	9	0	1	2	2
10220	White Linen	20	63	17	0,34	2	0,24	2	0,13	3	0,09	4	16	71	7	9	0	1	2	2
10027	White Pearl	16	57	27	0,35	1	0,24	2	0,12	3	0,08	4	12	64	6	6	0	1	2	2

The technical data above are average values with a +/- 5% tolerance. The values quoted above represent results of standards and internal tests performed and are provided for information only to enable to make the best use of our products. To ensure warranty effectiveness, refer to warranty certificate concerned available on demand. Our products are subjects to technical evolutions, we remain entitled to modify the characteristics of our products at any time. The buyer of our products is responsible for checking the validity of the above data.