

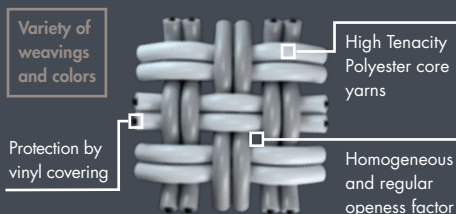
POLYSCREEN®



T3



POLYSCREEN® 403



EFICIENCIA TÉRMICA Y VISUAL CON ESTÉTICA TEXTIL

- Excelente protección térmica gestión de hasta el 94% de energía solar ($G_{tote} = 0.06 - G_{toti} = 0.23$).
- Visibilidad exterior y eficiencia térmica: 3% de apertura homogénea
- Rendimiento energético: contribuye al ahorro energético en calefacción y aire acondicionado.
- Filtrado de la luz muy eficaz: bloqueo del 97% de la luz (TV=3%)
- Tejido sostenible, respetuoso con la salud y el medio ambiente, 100% reciclable.
- Calidad del aire: inoloro, no desprende COV (certificado Greengard Gold).
- Enrolle perfecto incluso para grandes dimensiones (ancho 250-300 cm).
- Resistencia a condiciones meteorológicas extremas (IMO) y al cloro.

EFFET TEXTILE PRONONCÉ , EFFICACITÉ THERMIQUE ET LUMINEUSE

- Protection thermique renforcée : jusqu'à 94% de l'énergie solaire maîtrisée ($G_{tote} = 0.06 - G_{toti} = 0.23$)
- Visibilité extérieure et efficacité thermique : 3% d'ouverture homogène
- Performances énergétiques : contribue aux économies de chauffage et de climatisation
- Filtre efficacement la lumière : 97% de la lumière stoppée (TV = 3%)
- Tissu éco-conçu, respectueux de la santé et de l'environnement, 100% recyclable
- Qualité de l'air : sans odeur, il ne dégage pas de COV (certifié Greengard Gold)
- Excellent enroulement même en grandes dimensions (largeur 250-300 cm)
- Résiste aux conditions météorologiques en milieux les plus extrêmes (IMO), résistance au chlore

THERMAL AND VISUAL EFFICIENCY, WITH A TEXTILE APPEARANCE

- Excellent thermal protection, managing up 94% of solar heat (both indoors and outdoors: $G_{tote} = 0.06 - G_{toti} = 0.23$).
- Visibility to the outside and thermal efficiency: 3% degree of opening, throughout the entire shade
- Energy efficiency: contributes to energy savings in heating and air conditioning.
- Highly efficient sunlight filter: blocks 97% of the sunlight (TV=3%)
- A sustainable, 100% recyclable, environmentally friendly and health-friendly fabric.
- Air quality: colorless, VOC emission free (Greenguard Gold certified).
- Perfect roll, even in large sizes (250-300 cm in width).
- Resistant to extreme climate conditions (IMO) and chlorine.

EFFICIENZA TERMICA E VISIVA CON ESTETICA TESSILE

- Eccellente protezione termica, gestione fino al 94% di energia solare ($G_{tote} = 0.06 - G_{toti} = 0.23$).
- Visibilità esterna ed efficienza termica: 3% di apertura omogenea
- Rendimento energetico: contribuisce al risparmio energetico nel riscaldamento e nell'aria condizionata.
- Filtraggio della luce molto efficace: blocco del 97% della luce (TV=3%)
- Tessuto sostenibile, rispettoso della salute e dell'ambiente, 100% riciclabile.
- Qualità dell'aria: inodore, non rilascia COV (certificato Greenguard Gold).
- Avvolgimento perfetto anche per grandi dimensioni (larghezza 250-300 cm).
- Resistenza a condizioni meteorologiche estreme (IMO) e al cloro.

PROPERTIES



MAINTENANCE



CERTIFICATES

FABRICS CERTIFICATES



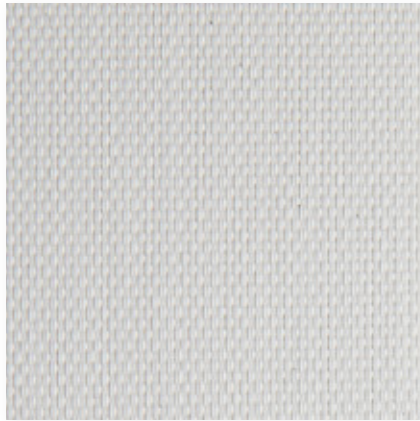
COMPANY & SYSTEMS CERTIFICATES



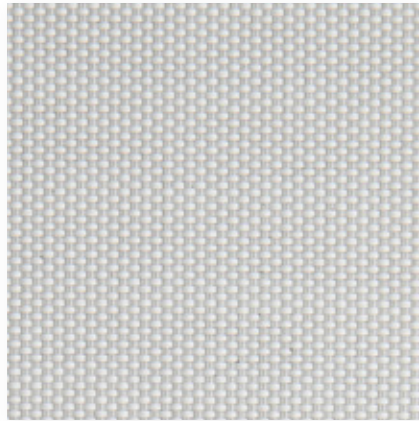
Contributing to Ecofriendly Building



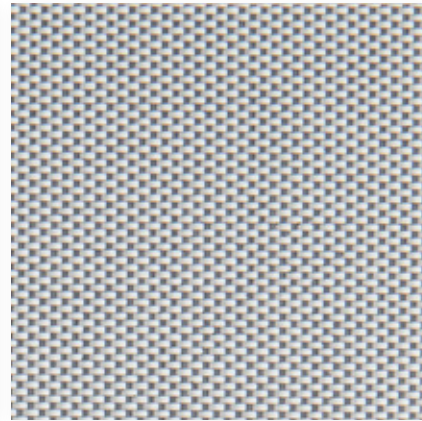
contract.bandalux.com



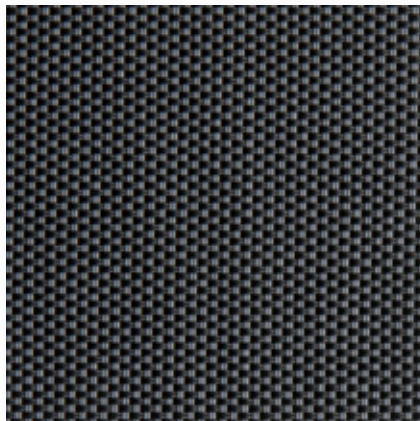
White
Ref. 28002



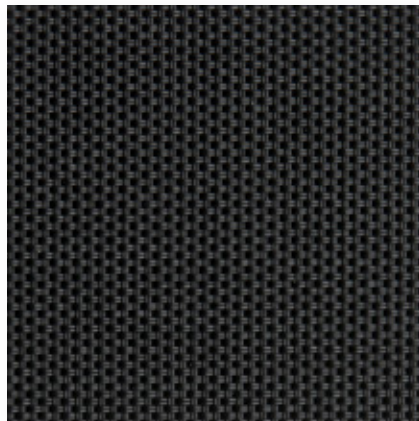
White Pearl
Ref. 28027



White Grey
Ref. 28021



Ash
Ref. 28099



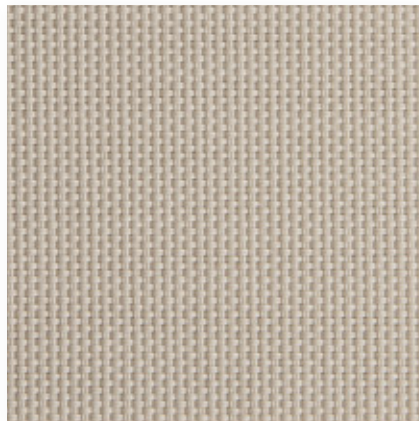
Ebony
Ref. 28080



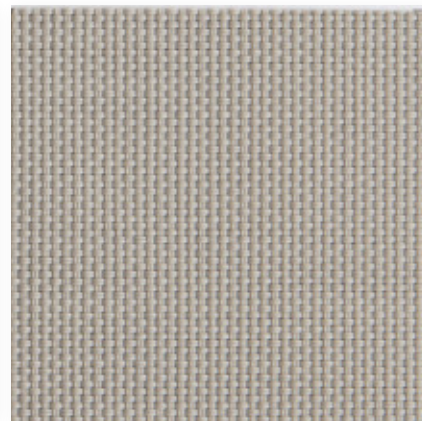
White Linen
Ref. 28220



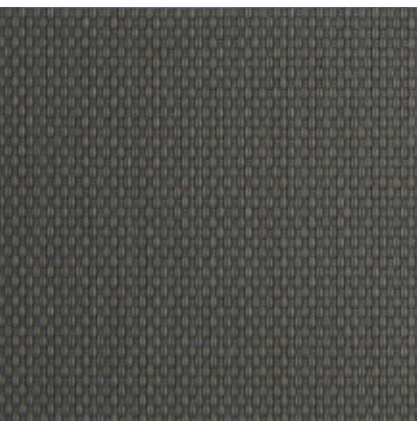
Linen
Ref. 28020



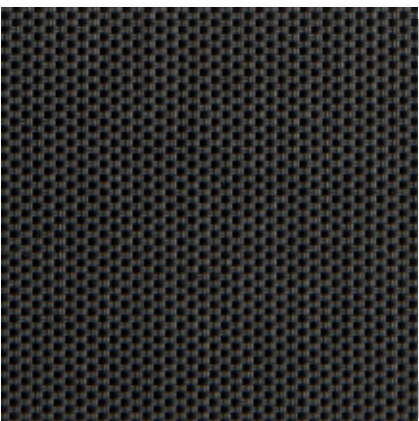
Cinder
Ref. 28958



Pebble
Ref. 28959



Slate
Ref. 28850



Tobacco
Ref. 28004

OF 3%

POLYSCREEN® 403

TECHNICAL DATA

Composición / Composition / Composition / Composizione	-	80% PVC + 20% PES
Peso / Poids / Weight / Peso	EN 12127	485 g/m ² - 14,30 oz/yd ²
Espesor / Épaisseur / Thickness / Spessore	EN ISO 5084	0,65 mm - 0,025"
Ancho de rollo / Largeur rouleau Roll width / Larghezza del tessuto	-	250 cm - 98"
Grado de apertura / Coefficient d'ouverture Openess Factor / Grado di apertura (%)	-	3%
Resistencia al fuego / Classement feu Fire classification / Resistenza al fuoco	NF P 92 503 DIN 4102 EN 13501-1 EN 13773 NFPA 701 - CAN/ULC-S109-3- C.A.C Title 19 UNI 9177	M1 B1 Bs2d0 Class 1 Pass Classe 1
Wheelmark	IMO Res.MSC.307(88)-(2010 FTP Code) IMO MSC/Circ. 1102	Pass
Resistencia al desgarro / Résistance à la déchirure Tear resistance / Resistenza alla trazione (daN)	EN ISO 13937-3	5,8 daN - 4,5 daN
Resistencia a la ruptura / Résistance rupture Tensile strength / Resistenza alla rottura (daN/5cm)	EN ISO 13934-1	186 daN - 122 daN
Resistencia a la luz / Résistance à la lumière Light Fastness / Resistenza alla luce (Grey Scale)	EN ISO 105 B06 (interior) EN ISO 105 B03 (exterior) EN ISO 105 B04 (exterior) EN ISO 4892-2 (exterior)	5/5 4/5 White
Resistencia a la luz / Résistance à la lumière Light Fastness / Resistenza alla luce (Blue Scale)	EN ISO 105 B02 (interior)	8/8 7/8 White
Test de olores / Test d'odeur / Odour test / Test degli odori	PV-3900	3 Pass
Resistencia en ambientes salinos Résistance aux environnements salins Durability in saline environment Resistenza in ambienti salini	EN ISO 112-017:92 ISO 9227:90	Sin cambios en la superficie (max.nivel) Aucun changement en surface (niveau max.) Whitout changes in surface (max. level) Senza cambi in superficie (niveolo mass)
Actividad antimicrobiana / Activité antibacterienne Antimicrobial activity / Attività antimicrobica	ASTM 2180-01 and ASTM G21-09	Inhibe la proliferación de bacterias Pas de prolifération de bactérie Microorganism growth inhibition Impedisce la proliferazione dei batteri
Material reciclado / Matériaux recyclés Recycled material / Materiali riciclati	-	2% Pre-consumer

THERMAL FACTORS

OPTICAL FACTORS

Ref.	Colors	EN13363-1 (10% FRAME - Standard C and D)								EN410 - EN14500 - EN14501													
		% Ts		% Rs		% As		G _{tot} int Glazing C		G _{tot} int Glazing D		G _{tot} ext Glazing C		G _{tot} ext Glazing D		% Tv	% Rv	% Tv,n-n	% Tv,n-diff	Glare Control Class	Night Privacy Class	Visual Contact Class	Daylight Utilisation Class
		G _{tot}	CLASS	G _{tot}	CLASS	G _{tot}	CLASS	G _{tot}	CLASS	G _{tot}	CLASS	G _{tot}	CLASS	G _{tot}	CLASS								
28099	Ash	3	7	90	0,49	1	0,28	2	0,07	4	0,06	4	3	7	3	0,4	3	2	2	2	1		
28958	Cinder	12	42	46	0,39	1	0,25	2	0,10	3	0,07	4	8	44	3	5	1	2	1	1			
28080	Ebony	3	4	93	0,50	0	0,28	2	0,07	4	0,06	4	3	4	2	0,3	3	2	2	1			
28020	Linen	24	55	21	0,36	1	0,24	2	0,16	2	0,11	3	20	62	5	1,5	1	2	1	2			
28959	Pebble	9	33	58	0,42	1	0,26	2	0,09	4	0,07	4	5	35	3	2,5	2	2	2	1			
28850	Slate	4	13	83	0,47	1	0,27	2	0,07	4	0,06	4	3	14	3	0,4	3	2	2	1			
28004	Tobacco	3	5	92	0,49	1	0,28	2	0,07	4	0,06	4	3	5	3	0,3	3	2	2	1			
28002	White	19	70	11	0,32	2	0,23	2	0,13	3	0,09	4	15	81	3	12	1	2	1	2			
28021	White Grey	11	45	44	0,38	1	0,25	2	0,09	4	0,07	4	9	53	4	5	1	2	1	1			
28220	White Linen	18	66	16	0,33	2	0,23	2	0,12	3	0,08	4	14	75	3	11	1	2	1	2			
28027	White Pearl	16	61	23	0,34	2	0,24	2	0,11	3	0,08	4	12	70	3	9	1	2	1	2			

The technical data above are average values with a +/- 5% tolerance. The values quoted above represent results of standards and internal tests performed and are provided for information only to enable to make the best use of our products. To ensure warranty effectiveness, refer to warranty certificate concerned available on demand. Our products are subjects to technical evolutions, we remain entitled to modify the characteristics of our products at any time. The buyer of our products is responsible for checking the validity of the above data.