

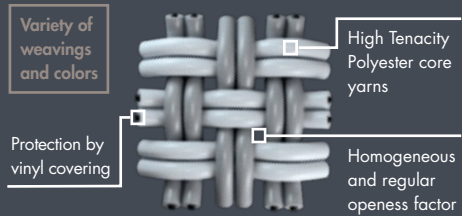
# POLYSCREEN®



T3



# POLYSCREEN® 351



## EXCELENTE COMPROMISO ENTRE EFICIENCIA TÉRMICA Y CONFORT VISUAL

- Excelente protección térmica gestión de hasta el 95% de energía solar ( $G_{tote} = 0.05 - G_{toti} = 0.23$ ).
- Privacidad y bloqueo térmico: 1% de apertura homogénea.
- Rendimiento energético: contribuye al ahorro energético en calefacción y aire acondicionado.
- Filtrado de la luz muy eficaz: 99% de la luz bloqueada ( $TV=1\%$ )
- Contribuye al confort acústico:  $\alpha_w = 0,50$ .
- Tejido sostenible, respetuoso con la salud y el medio ambiente, 100% reciclable.
- Calidad del aire: inoloro, no desprende COV (certificado Greenguard Gold).
- Enrolle perfecto incluso para grandes dimensiones (ancho 250-300 cm).
- Resistencia a condiciones meteorológicas extremas (IMO) y al cloro.

## EXCELLENT COMPROMIS ENTRE EFFICACITÉ THERMIQUE ET CONFORT VISUEL

- Protection thermique renforcée : jusqu'à 95% de l'énergie solaire maîtrisée ( $G_{tote} = 0.05 - G_{toti} = 0.23$ )
- Confidentialité et barrière thermique : 1% d'ouverture homogène
- Performances énergétiques : contribue aux économies de chauffage et de climatisation
- Excellent filtre lumineux : 99% de la lumière stoppée ( $TV = 1\%$ )
- Contribue au confort acoustique :  $\alpha_w = 0.50$
- Tissu éco-conçu, respectueux de la santé et de l'environnement, 100% recyclable
- Qualité de l'air : sans odeur, il ne dégage pas de COV (certifié Greenguard Gold)
- Excellent enroulement même en grandes dimensions (largeur 250-300 cm)
- Résiste aux conditions météorologiques et milieux les plus extrêmes (IMO), résistance au chlore

## EXCELLENT BALANCE BETWEEN THERMAL EFFICIENCY AND VISUAL COMFORT

- Excellent thermal protection, managing up 95% of solar heat (both indoors and outdoors:  $G_{tote} = 0,05 - G_{toti} = 0,23$ )
- Privacy and thermal protection: 1% degree of opening, throughout the entire shade
- Energy efficiency: contributes to energy savings in heating and air conditioning.
- Highly efficient sunlight filter: blocks 99% of the sunlight ( $TV=1\%$ )
- Contributes to acoustic comfort:  $\alpha_w = 0,50$ .
- A sustainable, 100% recyclable, environmentally friendly and health-friendly fabric.
- Air quality: colorless, VOC emission free (Greenguard Gold certified).
- Perfect roll, even in large sizes (250-300 cm in width).
- Resistant to extreme climate conditions (IMO) and chlorine.

## ECCELLENT COMPROMESSO TRA EFFICIENZA TERMICA E COMFORT VISIVO

- Eccellente protezione termica, gestione fino al 95% di energia solare ( $G_{tote} = 0,05 - G_{toti} = 0,23$ ).
- Privacy e isolamento termico: 1% di apertura omogenea
- Rendimento energetico: contribuisce al risparmio energetico nel riscaldamento e nell'aria condizionata.
- Filtraggio della luce molto efficace: 99% della luce bloccata ( $TV = 1\%$ )
- Contribuisce al comfort acustico:  $\alpha_w = 0,50$ .
- Tessuto sostenibile, rispettoso della salute e dell'ambiente, 100% riciclabile.
- Qualità dell'aria: inodore, non rilascia COV (certificato Greenguard Gold).
- Avvolgimento perfetto anche per grandi dimensioni (larghezza 250-300 cm).
- Resistenza a condizioni meteorologiche estreme (IMO) e al cloro.

### PROPERTIES



### MAINTENANCE



### CERTIFICATES

#### FABRICS CERTIFICATES



#### COMPANY & SYSTEMS CERTIFICATES



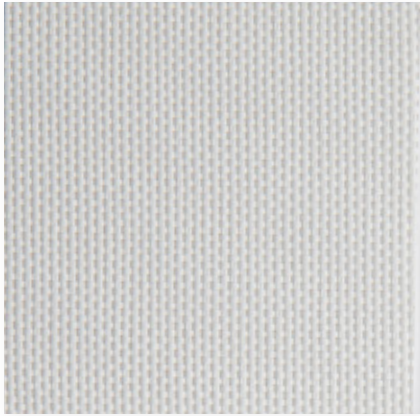
Contributing to Ecofriendly Building

Suitable for HP Latex

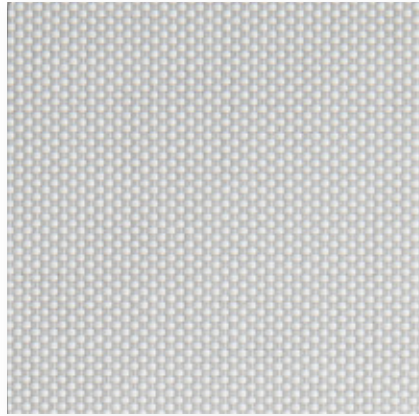


contract.bandalux.com

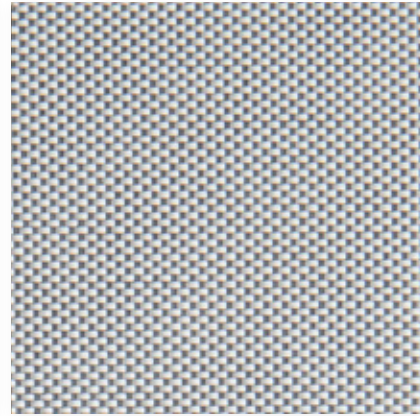




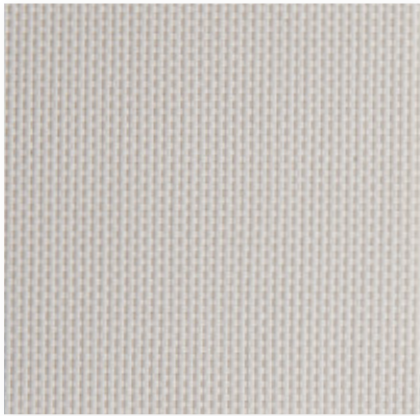
White  
Ref. 16002



White Pearl  
Ref. 16027



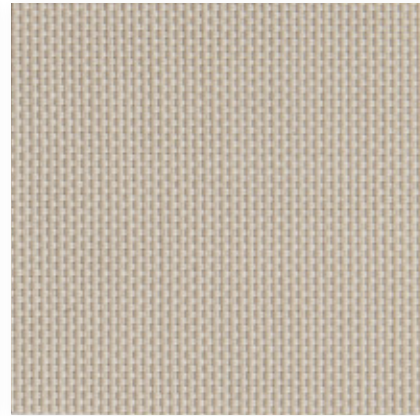
White Grey  
Ref. 16021



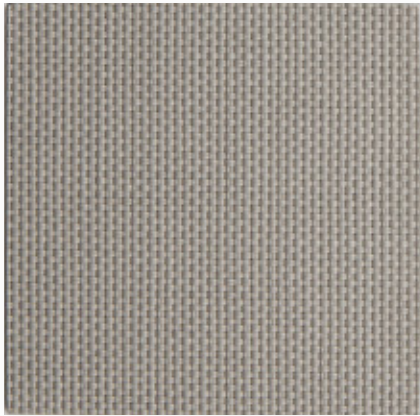
Linen  
Ref. 16020



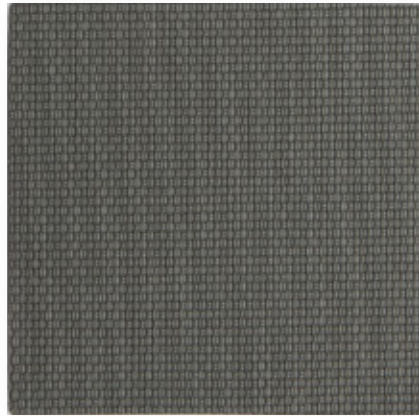
White Linen  
Ref. 16220



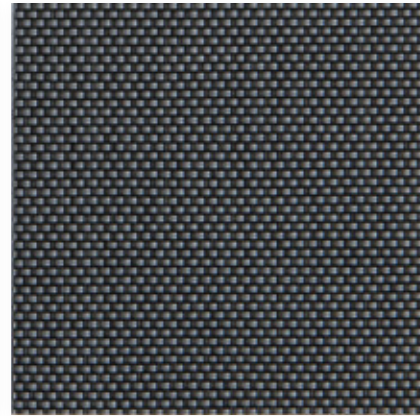
Cinder  
Ref. 16958



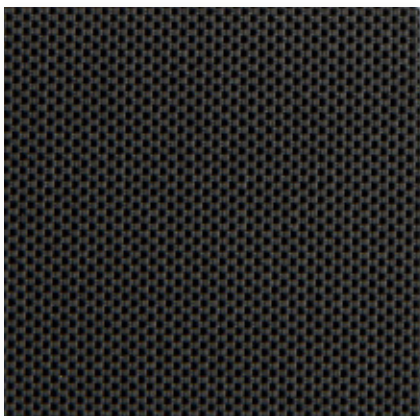
Pebble  
Ref. 16959



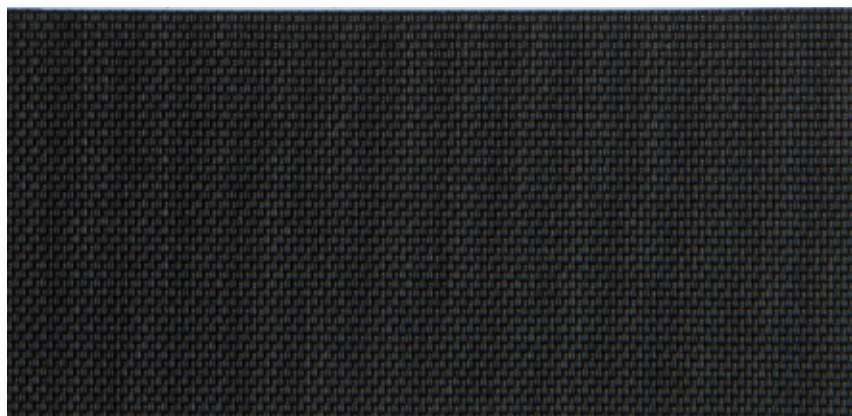
Slate  
Ref. 16850



Ash  
Ref. 16099



Tobacco  
Ref. 16004



Ebony  
Ref. 16080

OF 1%

POLYSCREEN® 351

TECHNICAL DATA

Composición / Composition / Composition / Composizione	-	80% PVC + 20% PES
Peso / Poids / Weight / Peso	EN 12127	508 g/m <sup>2</sup> - 14,98 oz/yd <sup>2</sup>
Espesor / Épaisseur / Thickness / Spessore	EN ISO 5084	0,65 mm - 0,025"
Ancho de rollo / Largeur rouleau Roll width / Larghezza del tessuto	-	250 cm - 98"
Grado de apertura / Coefficient d'ouverture Openess Factor / Grado di apertura (%)	-	1%
Absorción acústica / Absorption acoustique Sound absorption / Assorbimento acustico	EN ISO 10534:2	$\alpha_w=0,5$
Resistencia al fuego / Classement feu Fire classification / Resistenza al fuoco	NF P 92 503 DIN 4102 EN 13501-1 EN 13773 NFPA 701 - CAN/ULC-S109.3 - C.A.C Title 19	M1 B1 Bs2d0 Class 1 Pass
Wheelmark	IMO Res.MSC.307(88)-[2010 FTP Code] IMO MSC/Circ. 1102	Pass
Resistencia al desgarro / Résistance à la déchirure Tear resistance / Resistenza alla trazione (daN)	EN ISO 13937-3	5,3 daN - 3,3 daN
Resistencia a la ruptura / Résistance rupture Tensile strength / Resistenza alla rottura (daN/5cm)	EN ISO 13934-1	186 daN - 145 daN
Resistencia a la luz / Résistance à la lumière Light Fastness / Resistenza alla luce (Grey Scale)	EN ISO 105 B06 (interior) EN ISO 105 B03 (exterior) EN ISO 105 B04 (exterior) EN ISO 4892-2 (exterior)	5/5 4/5 White
Resistencia a la luz / Résistance à la lumière Light Fastness / Resistenza alla luce (Blue Scale)	EN ISO 105 B02 (interior)	8/8 7/8 White
Test de olores / Test d'odeur / Odour test / Test degli odori	PV-3900	3 Pass
Resistencia en ambientes salinos Résistance aux environnements salins Durability in saline environment Resistenza in ambienti salini	EN ISO 112-017:92 ISO 9227:90	Sin cambios en la superficie (max.nivel) Aucun changement en surface (niveau max.) Whitout changes in surface (max. level) Senza cambi in superficie (nivele mass)
Actividad antimicrobiana / Activité antibacterienne Antimicrobial activity / Attività antimicrobica	ASTM 2180-01 and ASTM G21-09	Inhibe la proliferación de bacterias Pas de prolifération de bactérie Microorganism growth inhibition Impedisce la proliferazione dei batteri
Material reciclado / Matériaux recyclés Recycled material / Materiali riciclati	-	2% Pre-consumer

THERMAL FACTORS

OPTICAL FACTORS

Ref.	Colors	% Ts	% Rs	% As	EN13363-1 (10% FRAME - Standard C and D)								EN410 - EN14500 - EN14501							
					Grot int Glazing C		Grot int Glazing D		Grot ext Glazing C		Grot ext Glazing D		% Tv	% Rv	% Tv,n-n	% Tv,n-diff	Glare Control Class	Night Privacy Class	Visual Contact Class	Daylight Utilisation Class
					Grot	CLASS	Grot	CLASS	Grot	CLASS	Grot	CLASS								
16099	Ash	2	8	90	0,49	1	0,27	2	0,06	4	0,06	4	2	8	2	0	3	2	2	1
16958	Cinder	11	42	47	0,39	1	0,25	2	0,10	3	0,07	4	6	45	2	4	1	2	1	1
16080	Ebony	1	4	95	0,50	0	0,28	2	0,06	4	0,05	4	1	4	1	0	3	2	2	0
16020	Linen	21	57	22	0,35	1	0,24	2	0,14	3	0,10	3	16	64	3	13	1	2	1	2
16959	Pebble	6	34	60	0,41	1	0,26	2	0,07	4	0,06	4	3	36	1	2	3	2	2	1
16850	Slate	3	13	84	0,47	1	0,27	2	0,07	4	0,06	4	2	14	2	0,3	3	2	2	0
16004	Tobacco	2	5	93	0,49	1	0,28	2	0,06	4	0,06	4	2	5	2	0	3	2	2	1
16002	White	16	73	11	0,31	2	0,23	2	0,11	3	0,07	4	13	83	2	11	1	2	1	2
16021	White Grey	8	41	51	0,39	1	0,25	2	0,08	4	0,07	4	7	47	3	4	2	2	2	1
16220	White Linen	17	66	17	0,33	2	0,23	2	0,12	3	0,08	4	13	75	2	11	1	2	1	2
16027	White Pearl	13	60	27	0,34	2	0,24	2	0,10	3	0,07	4	10	69	2	8	1	2	1	1

The technical data above are average values with a +/- 5% tolerance. The values quoted above represent results of standards and internal tests performed and are provided for information only to enable to make the best use of our products. To ensure warranty effectiveness, refer to warranty certificate concerned available on demand. Our products are subjects to technical evolutions, we remain entitled to modify the characteristics of our products at any time. The buyer of our products is responsible for checking the validity of the above data.